



# JOINING THE JUNIOR LEAGUE OF THE LEHIGH VALLEY

PROSPECTIVE MEMBER GUIDE



# HISTORY OF

# THE ASSOCIATION OF JUNIOR LEAGUES INTERNATIONAL

# COMMUNITY FOOTPRINT

Since 1901, The Association of Junior Leagues International (AJLI), or The Junior League, has been a premier women's organization dedicated to advancing women's leadership for meaningful community impact through volunteer action, collaboration, and training. Our core foundation is to 'Develop Women to Do a World of Good'. Together, we work to create equitable and thriving communities, believing in the power of women's leadership as a catalyst for meaningful impact. Here's a look at a few of the projects we've done over the past century.

- Access to vaccinations for children
- Education and provision of healthy food and nutrition for children
- Securing the right to vote for women
- Providing access to the arts
- Advancing literacy for children and adults
- Building awareness for the inadequacies of the justice system for adults and juveniles
- Establishing museums for children
- Legislation to secure safe drinking water
- Awareness for the problem of alcohol abuse
- Support for victims of domestic violence, human trafficking, and cyberbullying, and education of the public about the issue



**FOUNDER**



# MARY HARRIMAN

FOUNDER OF THE JUNIOR LEAGUE IN 1901



# FOUNDER



**“Our League, as I see it, was organized as a means of expressing the feeling of social responsibility for the conditions which surrounded us. We have the responsibility to act, and we have the opportunity to conscientiously act to affect the environment around us.”**

*Mary Harriman, 1912*

# NOTABLE JUNIOR LEAGUE WOMEN

Over the last 120+ years, The Junior League has trained thousands of members. These notable Members have paved the way forward for women, girls, and the larger public good and they used their notoriety to garner national attention to important community issues.



**NOTABLE JL WOMEN**



**SHIRLEY TEMPLE BLACK**  
JUNIOR LEAGUE OF PALO ALTO



**BARBARA BUSH**  
JUNIOR LEAGUE OF HOUSTON



**LAURA BUSH**  
JUNIOR LEAGUE OF DALLAS



**JULIA CHILD**  
JUNIOR LEAGUE OF PASADENA



**BETTY FORD**  
JUNIOR LEAGUE OF GRAND RAPIDS



**MARGARET HAMILTON**  
JUNIOR LEAGUE OF CLEVELAND



**NOTABLE JL WOMEN**



**KATHARINE HEPBURN**  
JUNIOR LEAGUE OF HARTFORD



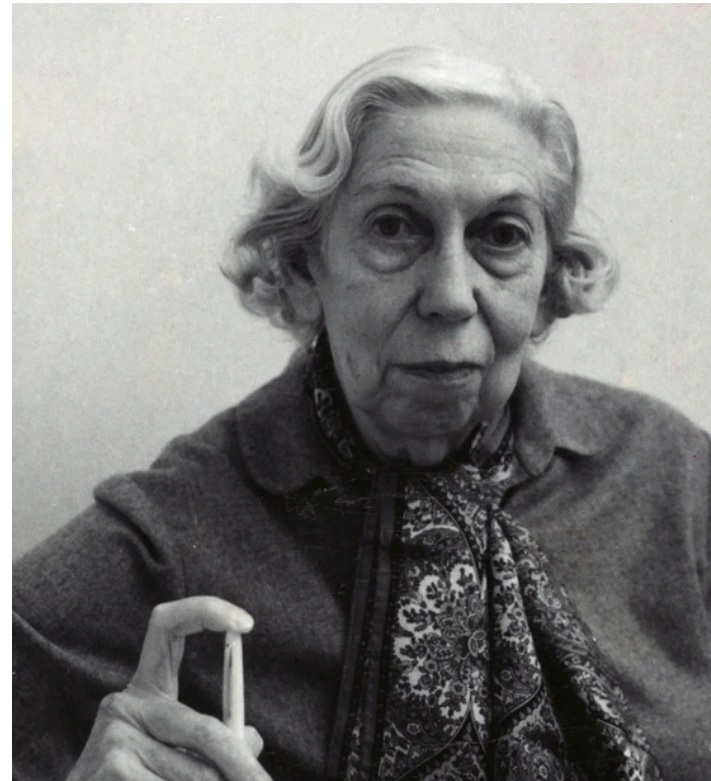
**SANDRA DAY O'CONNOR**  
JUNIOR LEAGUE OF PHOENIX



**NANCY REAGAN**  
JUNIOR LEAGUE OF LOS ANGELES



**ELEANOR ROOSEVELT**  
NEW YORK JUNIOR LEAGUE



**EUDORA WELTY**  
JUNIOR LEAGUE OF JACKSON, MS



**HELEN WILLS**  
JUNIOR LEAGUE OF SAN FRANCISCO





**AJLI TODAY**

# THE JUNIOR LEAGUE

The Junior League—and the more than 125,000 women in over 298 communities in the United States, the United Kingdom, Canada, Mexico, and Kenya who comprise its ranks—has amassed an archive of tangible results & a reputation as thoughtful & influential change agents dedicated to the public good.





# HISTORY OF

**JUNIOR LEAGUE OF THE LEHIGH VALLEY**



[CHECK OUT OUR HISTORY VIDEO!](#)

The Junior League has played an integral part in the development of the Lehigh Valley, and has a proud history of making a positive impact. The League was organized in 1922 as The Junior Welfare League of Bethlehem, Pennsylvania. The Association of Junior Leagues International (AJLI), then AJLA, incorporated the Junior League of the Lehigh Valley (JLLVPA) during their 1943-44 League year.

# THROUGH THE DECADES



Our over 80-year legacy of leadership is built on our ability to train women leaders to tackle tough issues impacting women & children including education, healthcare, food access, literacy, and domestic violence.



The JLLVPA engaged in the initiation of several community-based current organizations including:



**WELLER HEALTH EDUCATION CENTER**

**MARVINE FOOD PANTRY**





**THE JULY PA**

**NOW**

## OUR MISSION STATEMENT

**The Junior League of the Lehigh Valley** is an organization of women whose Mission is to advance women's leadership for meaningful community impact through volunteer action, collaboration, and training.

## OUR VISION

**The Junior League of the Lehigh Valley** is the leading resource for trained volunteers. Through our programs, we educate the community, preserve the past, and build for the future of the Lehigh Valley.

# OUR COMMITMENT TO DIVERSITY AND INCLUSION

The Junior League welcomes all women who value our Mission. We are committed to inclusive environments of diverse individuals, organizations, and communities.



# COMMUNITY FOCUS AREA

Our current community impact focus is on the issue of Educational Disparity.

Through various volunteer, funding, and advocacy actions, the Junior League of the Lehigh Valley's initiatives primarily focus on improving life skills and decreasing the education gap by addressing summer slide, literacy, and food access.



# THE LEAGUE TODAY

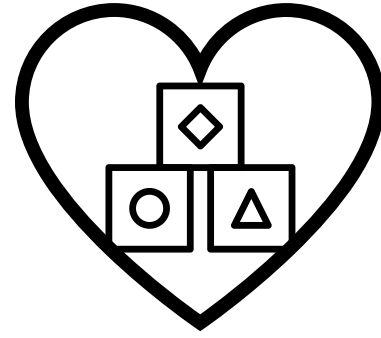
**150+  
MEMBERS**

**WE LIVE AROUND  
THE LEHIGH  
VALLEY INCLUDING  
BETHLEHEM,  
ALLENTOWN,  
EASTON, JIM  
THORPE,  
PHILLIPSBURG, &  
KUTZTOWN**

**WE ARE  
EDUCATORS,  
BUSINESS OWNERS,  
STAY-AT-HOME  
MOMS, VOLUNTEERS,  
LAWYERS, DOCTORS,  
ENGINEERS, &  
LEADERS**

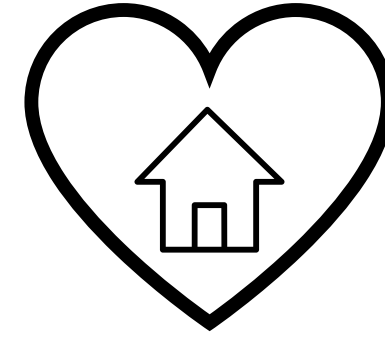
**OUR MEMBERS  
REPRESENT A  
BROAD RANGE OF  
PERSPECTIVES,  
BACKGROUNDS, &  
EXPERIENCES  
BOUND BY A  
GOAL OF MAKING  
A DIFFERENCE**





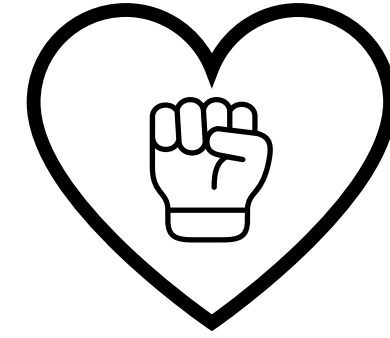
## **COLLABORATION:**

We believe lasting societal change is achieved through both collaboration and meaningful disagreement. Living the value of collaboration inspires us to accomplish more together.



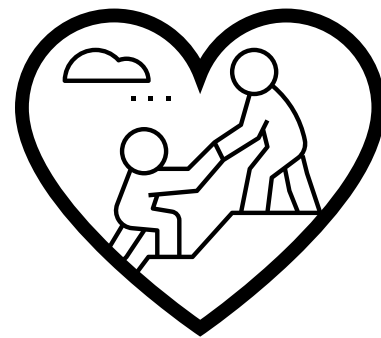
## **COMMUNITY:**

We believe a strong sense of community is essential to human well-being. Living the value of community provides a foundation of inclusion, which allows us to make a greater impact on the world around us.



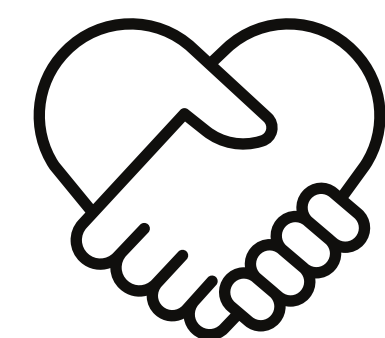
## **EMPOWERMENT:**

We believe that the empowerment of women is a necessary requirement to create positive, lasting societal change. Living the value of empowerment fosters trust and confidence in each other.



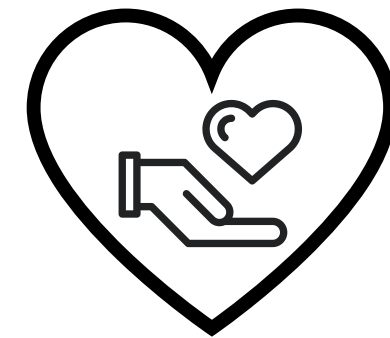
## **LEADERSHIP:**

We believe in the unique power of women's leadership abilities to transform communities for the better. Living the value of leadership allows us to make a collective difference.



## **RESPECT:**

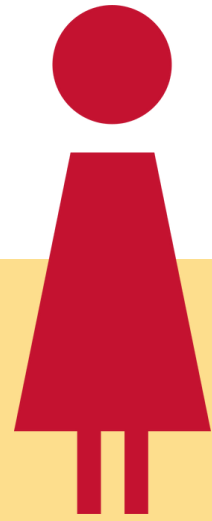
We believe respect is a fundamental human right. Living the value of respect instills in us unconditional positive regard for others.



## **SERVICE:**

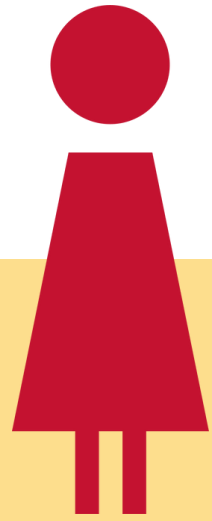
We believe it is through service that we build core relationships with others. Service is the lens through which we decide how we will invest our time and resources. Living the value of service empowers us as catalysts for lasting community change.

# MEMBERSHIP LEVELS



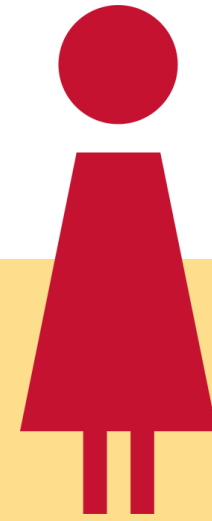
## Provisional/ New Member

Status of membership in which one is engaged in training established by the JLLVPA to prepare them for effective community and JLLVPA involvement. Non-voting members.



## Active

An Active Member of the JLLVPA has successfully completed her New Member requirements and volunteers her time and talents to our organization and to the community.



## Sustainer

A Sustaining Member is a former Active Member who has reached the age of forty (40) and completed five (5) years of active service or prior to the age of forty (40) and completed eight (8) years of active service.



## Transfer

A Transfer is a Member that moves from another League that is in good standing. They can be a New Member, Active, or Sustainer.



## Sustainer Emeritus

Sustainer Emeritus is a Sustainer who has reached the age of eighty (80) years.

# BACKPACK GIVEBACK

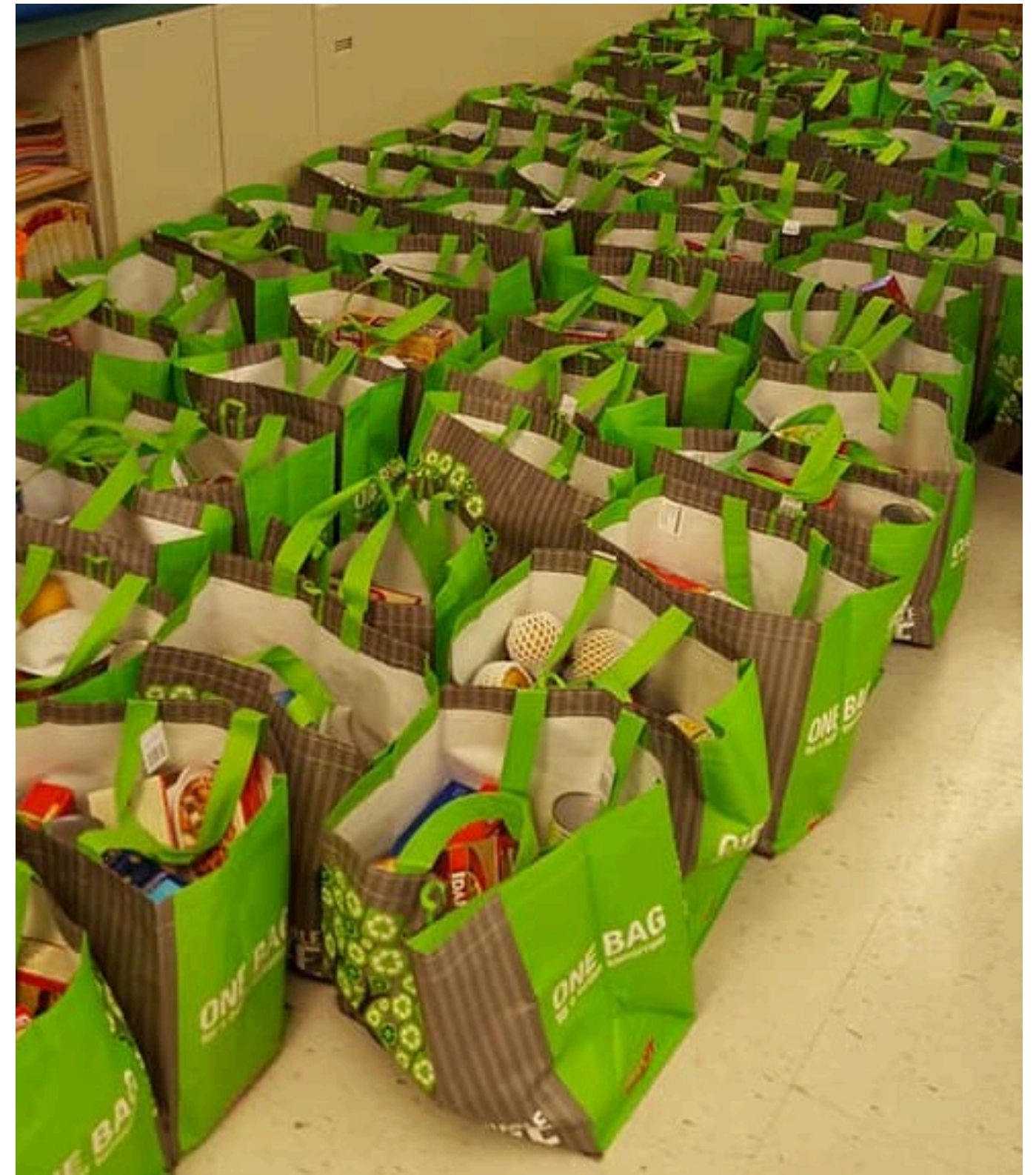


Every August since 2019, the JLLVPA packs over 500 backpacks filled with school supplies for local elementary schools and additional supplies needed by teachers. These backpacks help incoming students start the school year confident and prepared to learn!



# THANKSGIVING BASKETS

Every November, the JLLVPA donates Thanksgiving baskets to local families. The baskets include a grocery store gift card and perishable & non-perishable foods. We work with our community partners to locate food insecurities in greatest need.



# SCHOLARSHIP PROGRAM

Since 2018, the JLLVPA has awarded over \$45,000 in scholarships to female students.

Beginning in 2022, the League began investing in local community colleges by contributing funds to cover tuition costs for two (2) students at both Northampton Community College and Lehigh Carbon Community College.

This partnership allows the League to leverage the expertise of community partners and continue to impact the issue of educational disparity in the Lehigh Valley.



# IMPACT FUND

The Impact Fund, the League's main philanthropic initiative, utilizes personal campaigns to promote the League, our work, and how financial contributions make a difference.

In addition to bringing in crucial dollars to support the League's work, the Impact Fund campaign provides skill development for members, a key element of our mission.

Annually, a devoted group of fundraisers reach out to their friends, families, colleagues, and business networks to raise funds to help the League's work continue.





# MEMBERSHIP EXPERIENCE

# MEMBERSHIP CRITERIA

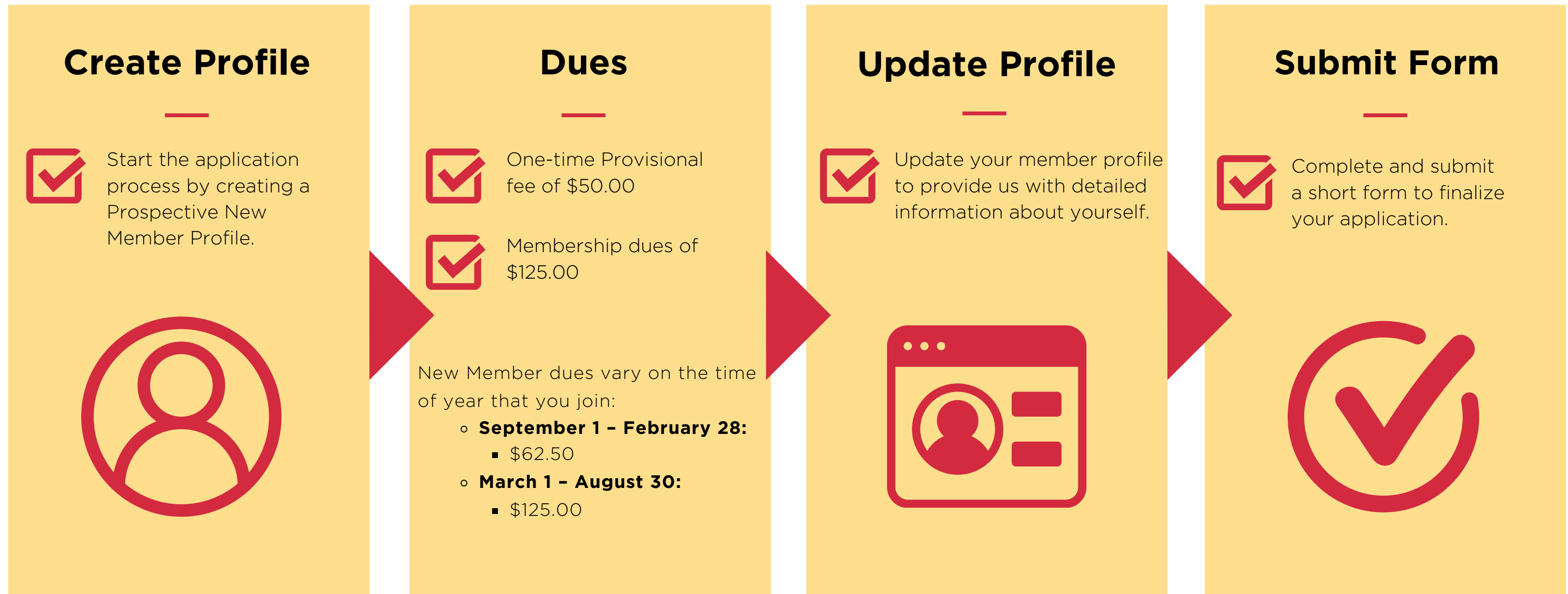
Any woman is invited to join who meets these requirements:

- You must be at least 21 years old when submitting your application (There is no maximum age to join!)
- Demonstrate an interest in being engaged in the community and leadership development
- Seek the opportunity to participate in work through the Junior League that results in meaningful and sustained community impact
- Value the mission of the Junior League



# BECOME A MEMBER

Women interested in membership should visit [jllvpa.org](http://jllvpa.org) to complete the following steps:



# PROVISIONAL REQUIREMENTS

After completing & submitting an application and paying dues, a new member is required to participate in the following:

## Orientation



Attend a 30-minute orientation session with an assigned Guide

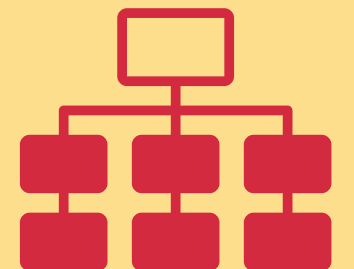
## Eight Leadership Subjects



Attend one training module for each of the eight leadership subjects:

- Volunteer Development
- Marketing/Communications
- Fund Development
- Organizational Management
- Governance
- Community Impact
- Diversity, Equity, Inclusion, & Belonging
- JLLVPA or AJLI History

## Select from a variety of options



# ACTIVE MEMBER REQUIREMENTS

UPON COMPLETION OF YOUR PROVISIONAL MEMBER REQUIREMENTS, YOU ARE AUTOMATICALLY AN ACTIVE MEMBER. ACTIVE MEMBERS ARE REQUIRED TO COMPLETE THE FOLLOWING REQUIREMENTS:

## Placement Process

Participate in the annual placement process



Decide your Commitment



Choose your Skills



Fill Out Placement Matching Tool

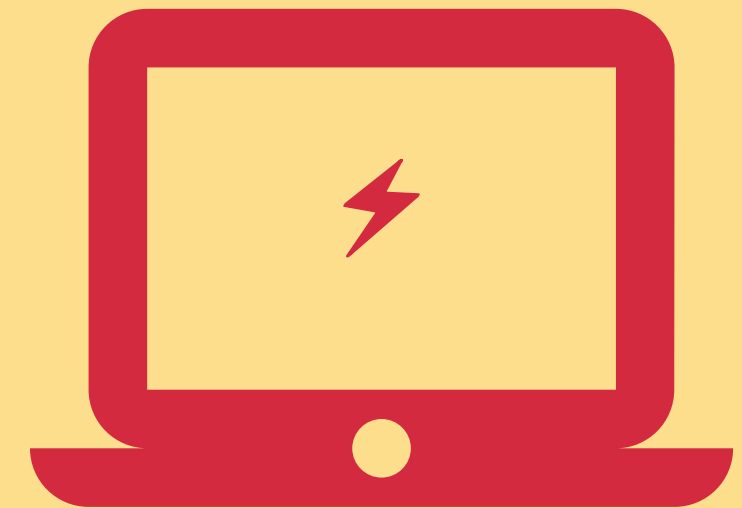
## Annual Placement

Each year, Active members serve on an in-League placement



## Dues

Pay membership dues by April 1



# MEMBERSHIP DUES Q&A

How much are your dues and when do Members need to pay by?

- Active members dues are \$125.00 and due by April 1.

What is included in your League dues?

- Dues payments give JLLVPA the financial support to sustain and elevate the Junior League experience for all members. In addition to \$43 that is allocated for each member to be part of the Association of Junior Leagues International, here are some examples of where your dues are allocated:
  - External Trainings
  - Resources to Build Skill Sets
  - Conferences
  - Funding General Membership Meetings
  - Operation of the League
  - External Speakers
  - Networking Opportunities
  - Professional and Career Development
  - Discounts and Special Offers

Is there a payment plan?

- Yes, dues may be paid in installments.

## NEW MEMBER GUIDE

The New Member Development committee will support and encourage new members during their orientation process. The committee guides will advise provisional members to ensure the member's goals and experiences align. The committee will conduct this purpose through a New Member Guide Program.

A New Member Guide is the primary point of contact for new members. Their role is to provide guidance, support, and encouragement to the new Members as they acclimate to the JLLVPA.

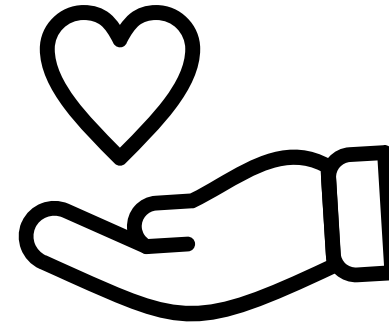


# CALENDAR OF EVENTS



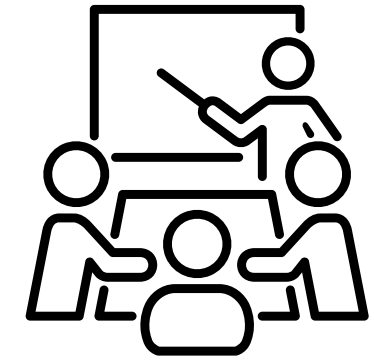
## MEETINGS:

*GMMs are a gathering open to all JLLVPA members typically held on the 3rd Wednesday of the month from August - November then January - May. GMMs provide development on the Eight Leadership Subjects*



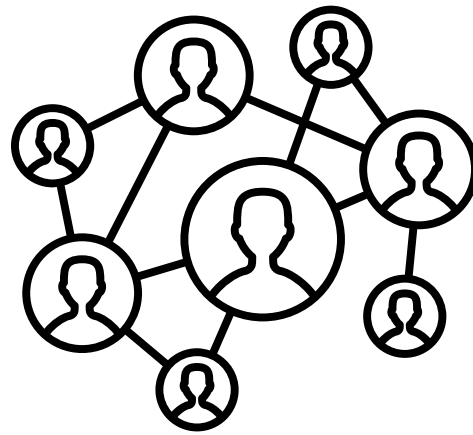
## VOLUNTEER OPPORTUNITIES

*Backpack giveback packing, Girls on the Run, Thanksgiving basket packing or delivery, Find the Good Day, or community events with our partner PBS*



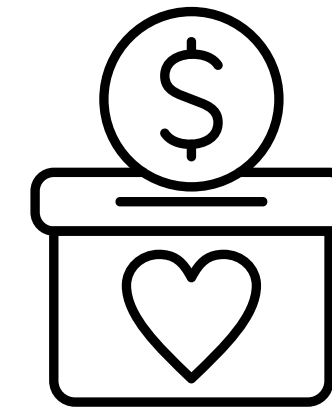
## TRAININGS

*AJLI conferences, Webinars, Small Leagues Big Impact conferences, League wide trainings held during GMMs*



## SOCIALS

*Book club, Iron Pigs, pre or post GMM gatherings, Documentary Night, and Holiday party*



## FUNDRAISERS

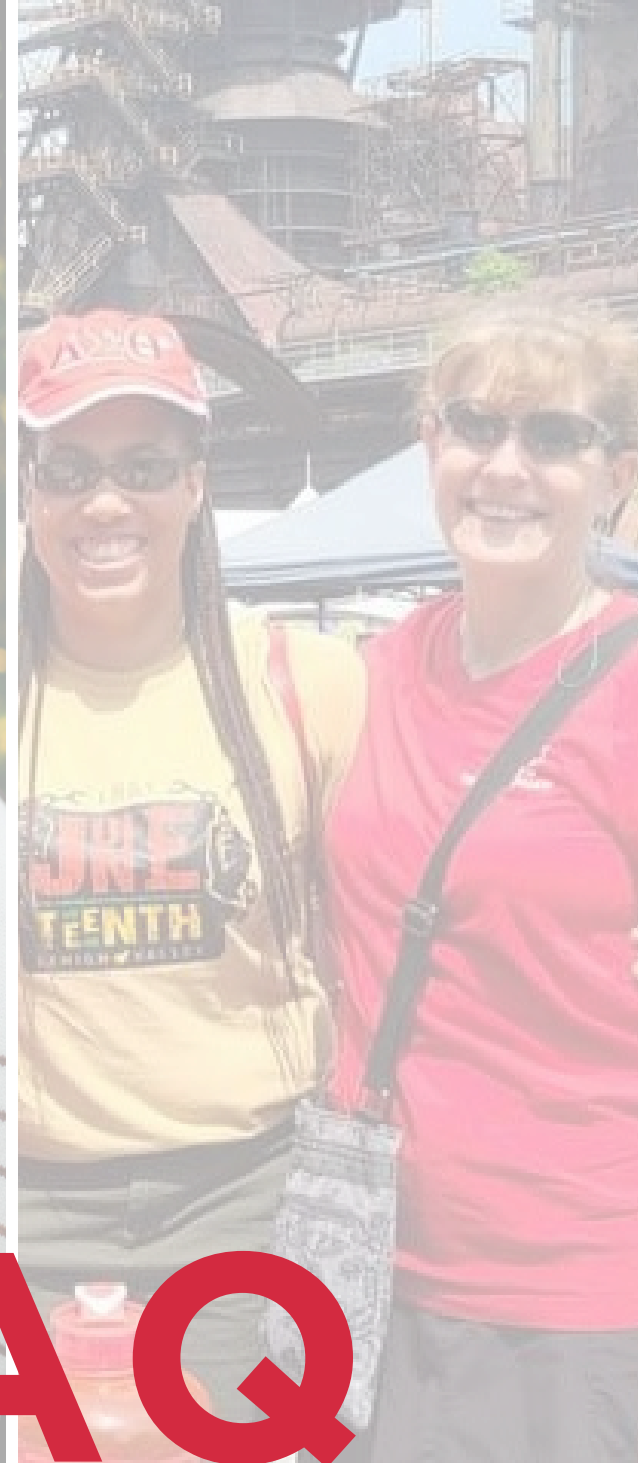
*Impact Fund and dine or shop for a cause*

## WHAT'S YOUR PLACEMENT?

Members are required to hold a League job or placement. Members receive a placement yearly based on availability, goals, and interests.

As a Provisional member you can choose to join a committee while you are completing your orientation or wait until you become an Active member.





# FAQ

**What is the timeline for becoming a member?**

The Junior League of the Lehigh Valley accepts applications year-round through our rolling admissions program. Our Provisional Orientation Program is designed for women with busy schedules and can be completed in as few as 6 months or up to 12 months.

**If I have a full-time job, can I still be a member?**

YES! Many women in the JLLV hold full-time jobs and other responsibilities outside the League. You can let us know how much time you can devote to the League.

**Do I need to have a sponsor to join?**

No.

**How often do you meet?**

Committees meet monthly. Additionally, the League holds trainings, socials, volunteer opportunities, and General Membership Meetings all year.



## **What are the benefits of joining the Junior League of the Lehigh Valley?**

*Make Lifelong Friendships* - JLLV members are a dedicated, hard-working community of women from various backgrounds. But, we all have a passion for volunteering which binds the members of our organization together. As a member, you will meet many interesting, talented, and intelligent women committed to making a difference in our community. In addition to the fun of volunteering, we like to have a lot of social fun too!

*Receive Valuable Hands-on Training* - Through committee work, educational training, and hands-on volunteering, members gain valuable skills such as grant and proposal writing, public relations, fundraising, public policy advocacy, event planning, marketing, advertising, committee management, and parliamentary procedure.

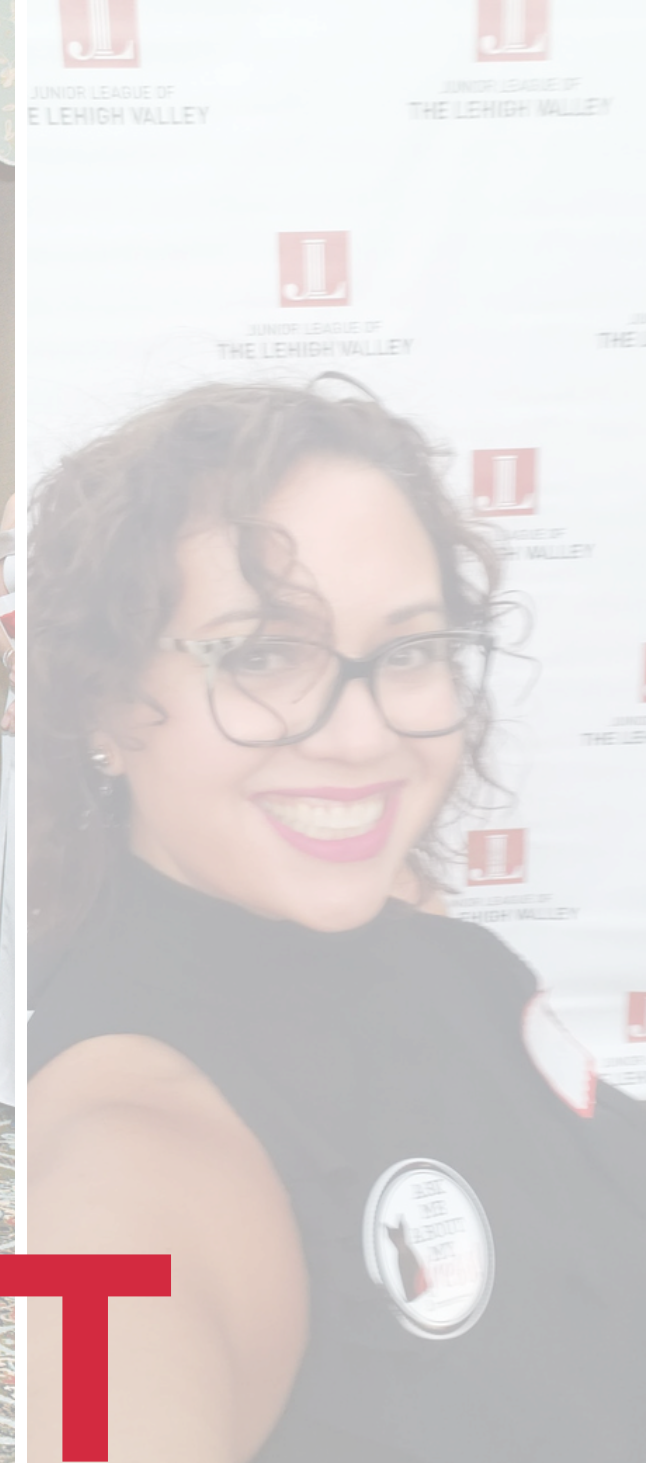
*Develop Leadership Skills* - Members develop core skills by serving on League committees that transfer well to their personal and professional lives. Leadership roles range from Co-Chairs, Committee Chair, to the Board of Directors. Leaders develop skills in managing teams of 3 to 30 people, strategic planning, annual planning, project management, public speaking, and ownership of programs or events from start to completion.

*Belong to an International Network of Passionate Volunteers* - The Junior League of the Lehigh Valley is part of something even bigger! We are a member of the Association of Junior Leagues International, Inc., an organization of over 125,000 members in 298 Leagues located in the United States, Canada, Mexico, and the United Kingdom. Because we are a membership organization affiliated with the Association of Junior Leagues International, any member in good standing has the benefit of being able to transfer their membership to another league – a valuable benefit if you will be moving to a new city!

### **I still have other questions. Is it ok to contact you?**

We would love to hear from you! If you have any questions or you would like to speak with someone about membership, please call 484-408-6688 or email [interest@jllvpa.org](mailto:interest@jllvpa.org)





**CONTACT**

**INFORMATION**

The New Member Committee is here to help - please  
don't hesitate to contact us!

